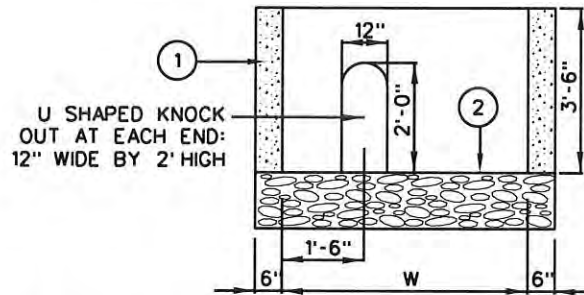
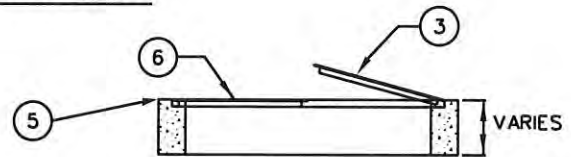


SERVICE SIZE	L1	L2	L3	W1	W2	W3
3"	72"	78"	90"	48"	48"	60"
4"	72"	78"	90"	48"	48"	60"
6"	96"	102"	114"	48"	54"	66"

VAULT & METER PLAN VIEW

NOTES:

- 1 VAULTS SHALL BE P.C.C. CONCRETE STRUCTURES CLASS 560-C-3250
- 2 NO FLOOR. CONSTRUCT 9" OF 1/2" ROCK BASE BENEATH VAULT
- 3 FRAME AND COVER COMPONENTS INCLUDING BRACES, SPRINGS, NUTS, AND BOLTS SHALL BE TYPE 316 STAINLESS STEEL
- 4 METER VAULT SHALL HAVE 10' CLEARANCE FROM ANY WALLS, OTHER UTILITIES OR SUB-SURFACE FACILITIES, UNLESS APPROVED BY WATER DIVISION
- 5 TOP OF BOX COVER SHALL BE FLUSH WITH CURB AND SIDEWALK.
- 6 VAULT COVER DESIGN:
 - A. IF INSTALLED IN PARKING LOTS OR AREAS THAT MAY RECEIVE TRAFFIC, USE U.S.F. P-AHD STEEL DIAMOND PLATE. SPRING ASSIST TRAFFIC DOOR, 316 STAINLESS STEEL HARDWARE, OPEN SPRINGS, SLAM-LOCK AND SLAVE LOCK SYSTEM, OVERSIZED RECESSED PADLOCK HASP, GALVANIZED. DESIGNED FOR USE IN LOCATIONS THAT RECEIVE SLOW-MOVING H-20 TRAFFIC WHEEL LOADS ON A REGULAR BASIS AND WHERE THE SPEED LIMIT DOES NOT EXCEED 15 M.P.H. INTENDED FOR CONTINUOUS OFF-STREET TRAFFIC APPLICATIONS FOR USE IN PARKING LOTS.
 - B. IF INSTALLED IN PARKWAYS OR AREAS PROTECTED FROM TRAFFIC, USE U.S.F. THD ALUMINUM DIAMOND PLATE. SPRING ASSIST COVER 316 STAINLESS STEEL HARDWARE, SLAM-LOCK AND SLAVE LOCK SYSTEM, OPEN SPRINGS, OVERSIZED RECESSED PADLOCK HASP. AREA OF FRAME IN CONTACT WITH CONCRETE TO BE PAINTED WITH BITUMINOUS COATING DESIGNED FOR OFF-STREET LOCATIONS WHICH MAY OCCASIONALLY RECEIVE H-20 WHEEL LOADS.



SIDE VIEW

APPROVED: DATE: 3/18/2016

Nami D. Saha

CITY OF SANTA ANA
PUBLIC WORKS AGENCY



DATE		REVISION
3/17/08	R.R.	NOTE 3, DIMENSIONS
6/4/13	J.A.	UPDATE DIMENSIONS
3/1/16	R.R.	UPDATE VAULT COVER

3", 4" AND 6"
WATER SERVICE VAULT

STD. PLAN
NUMBER
1403D