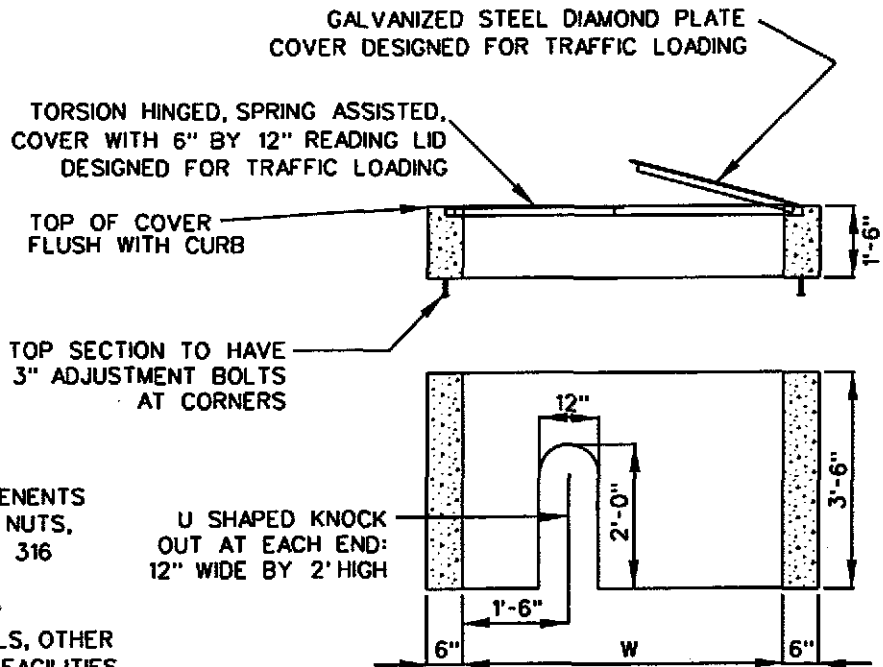


PLAN VIEW

SERVICE SIZE	W	L	A
3"	4'-0"	8'-0"	3'-1"
4"	4'-0"	8'-0"	3'-4"
6"	4'-0"	8'-0"	3'-10"

NOTES:

- ① VAULTS SHALL BE P.C.C. CONCRETE STRUCTURES CLASS 560-C-3250
- ② NO FLOOR. CONSTRUCT 9" OF ROCK BASE BENEATH VAULT.
- ③ FRAME AND COVER COMPONENTS INCLUDING BRACES, SPRINGS, NUTS, AND BOLTS SHALL BE TYPE 316 STAINLESS STEEL.
- ④ METER BOX SHALL HAVE 10" CLEARANCE FROM ANY WALLS, OTHER UTILITIES OR SUB-SURFACE FACILITIES, UNLESS APPROVED BY WATER DIVISION



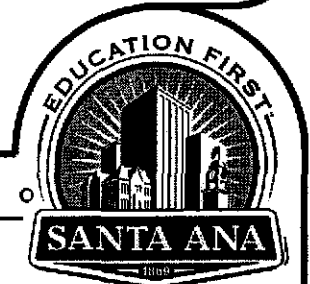
SIDE VIEW

APPROVED:

DATE:

[Signature] 11/26/09

CITY OF SANTA ANA
PUBLIC WORKS AGENCY



DATE	REVISION
10/9/98	ADDED TRAFFIC LOADING COVER
9/28/07	A.F. FLG & VLV TYP, FTG NOTE
3/17/08	R.R. NOTE 3, DIMENSIONS

3", 4" AND 6"
WATER SERVICE VAULT

STD. PLAN
NUMBER
1403D