



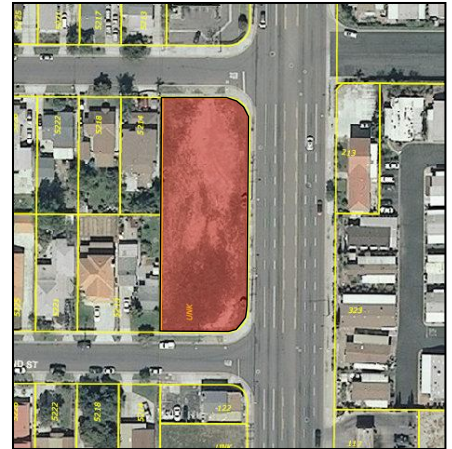
Development Activity Report

Last updated: November 2011

Commercial Activity

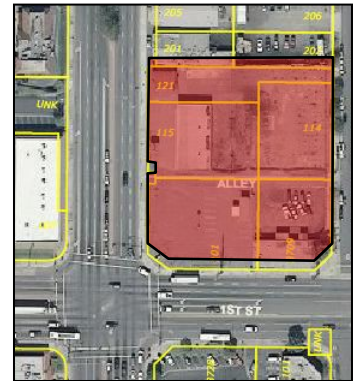
Dr. Bui Medical/Retail Building

- 202 N. Euclid St.
- New 2-story 6,500 sq. ft. medical/retail building
- Status: Site Plan Review comments returned to applicant
- Zoning: C-1 General Plan: LR
- Case Planner: Lucy Linnaus (714) 667-2745



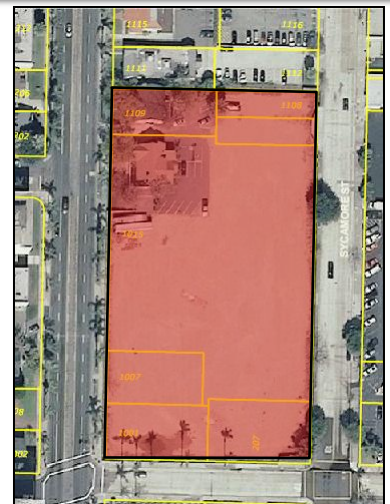
Drive-Through Pharmacy

- 115 N. Harbor Boulevard
- New 15,836 sq. ft. drive through drug store / pharmacy
- Status: Application to extend entitlements scheduled for City Council review on November 21, 2011
- Zoning: SP-2 General Plan: GC
- Case Planner: Vince Fregoso (714) 667-2713



One Broadway Plaza

- 1109 N. Broadway
- 37-story, 518,000 sq. ft. office tower
- New 8-story parking structure
- Status: Foundation permits issued 10/27/11
- Zoning: SD-75 General Plan: PAO
- Case Planner: Vince Fregoso (714) 667-2713



Commercial Activity (continued)

Audi Dealership Expansion

- 1425 S. Auto Mall Drive
- Add approximately 10,200 sq. ft. to existing showroom
- Status: Permits issued 3/30/11 – under construction
- Zoning: SD-60 General Plan: IND
- Case Planner: Vince Fregoso (714) 667-2713



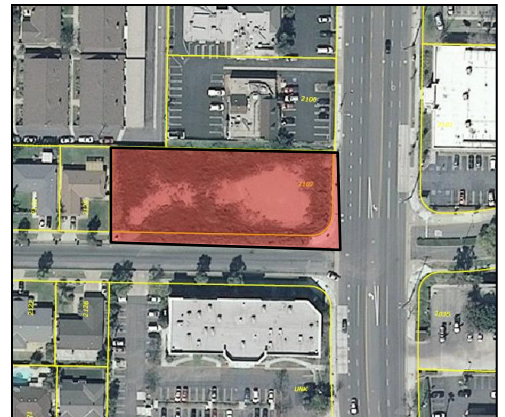
Torres Medical Building

- 1306 W. Santa Ana Blvd.
- New 6,000 sq. ft. medical clinic and office building
- Status: Permits issued 6/15/11 – under construction
- Zoning: C-2 General Plan: GC
- Case Planner: Vince Fregoso (714) 667-2713



Catalina Retail Building

- 2102 N. Tustin Avenue
- New 5,580 sq. ft. multi-tenant commercial building
- Status: Site Plan Review comments returned to applicant
- Zoning: C-5 General Plan: GC
- Case Planner: Lucy Linnaus (714) 667-2745



Commercial Activity (continued):

3312 W. First St.

- New 2-story 29,000 sq. ft. commercial building
- Status: Site Plan Review resubmitted
- Zoning: SP-2 General Plan: GC
- Case Planner: Vince Fregoso (714) 667-2713



1100 S. Grand Ave.

- New 3,838 sq. ft. McDonald's restaurant with drive through window
- Status: Traffic study underway
- Zoning: M-1 General Plan: IND
- Case Planner: Vince Fregoso (714) 667-2713



Residential Activity:

The MET at South Coast

- 200 E. First American Way
- 284-Unit, 5 and 6-story condominium buildings over parking
- Status: Revised plans submitted to Planning Division
- Zoning: SD-43 General Plan: DC
- Case Planner: Sergio Klotz (714) 667-2796



Lyon Homes

- 100 E. MacArthur Blvd.
- New 300 unit, 4-story apartment/condominium project
- Status: In plan check
- Zoning: SD-76 General Plan: DC
- Case Planner: Vince Fregoso (714) 667-2713



Francis Xavier

- 801 E. Santa Ana Blvd.
- 12 unit affordable housing/special needs project
- Status: Site Plan Review comments returned to applicant
- Zoning: UN-2 General Plan: UN
- Case Planner: Lucy Linnaus(714) 667-2745



Washington Avenue Courtyards

- 605 E. Washington Avenue
- 36-units on four, three story buildings over a semi-subterranean garage.
- Status: In plan check
- Zoning: UN-2 General Plan: UN
- Case Planner: Lucy Linnaus (714) 667-2745



Residential Activity (continued):

Vista Del Rio

- 1600 W. Memory Ln.
- New 41-unit special needs apartment housing
Status: Planning approved – not yet submitted to building
- Zoning: O General Plan: OS
- Case Planner: Melanie McCann (714) 667-2746



Tava Development

- 1584 E. Santa Clara Ave.
- 24 New single-family residences
- Status: Response to comments underway
- Zoning: R-1 General Plan: LR
- Case Planner: Vince Fregoso (714) 667-2713



Related Company

- 801 E. Brown St. and 714 E. Santa Ana Blvd.
- 13 and 12 unit courtyard housing that will range in size from 767 sq. ft. to 1,270 sq. ft.
- Status: Site Plan Review comments returned to applicant
- Zoning: UN-2 General Plan: UN
- Case Planner: Vince Fregoso (714) 667-2713



Related Company

- 600 N. Lacy
- 74-unit courtyard housing
- Status: In plan check
- Zoning: UN-2 General Plan: UN
- Case Planner: Verny Carvajal (714) 647-5899



Residential Activity (continued):

City Ventures (various):

Address	Zoning	General Plan	Description	Case Planner
501-515 E. 5 th St.	UN-2	UN	Rehabilitate 4 existing units	Sergio Klotz (714) 667-2796
606-620 E. 5 th St.	UN-2	UN	Construct 4 unit residential	Sergio Klotz (714) 667-2796
601-607 E. 5 th St.	UN-2	UN	Rehabilitate housing project	Sergio Klotz (714) 667-2796
615-621 E. 5 th St.	UN-2	UN	Rehabilitate 3 existing units	Sergio Klotz (714) 667-2796
712 E. 5 th St.	UN-2	UN	Rehabilitate one existing unit	Sergio Klotz (714) 667-2796
901-905 E. Brown St.	UN-2	UN	New residential infill	Sergio Klotz (714) 667-2796
802-804 E. Santa Ana	UN-2	UN	New residential infill	Sergio Klotz (714) 667-2796



Other:

Christ Our Savior Cathedral

- 2001 W. MacArthur Blvd.
- New 2,650 seat Catholic Cathedral
- 900 space parking lot
- Status: Planning approved-not yet submitted to Building
- Zoning: SD-4 General Plan: LR
- Case Planner: Vince Fregoso (714) 667-2713



YMCA

- 2100 W. Alton Ave.
- New 32,338 sq. ft. YMCA building
- Status: Phase I complete
- Zoning: SD-4 General Plan: LR
- Case Planner: Vince Fregoso (714) 667-2713



Mater Dei Park Structure

- 1202 W. Edinger Ave.
- New 3-story parking structure at the southeast section of the campus
- Status: Evaluating Environmental Consultants
- Zoning: O General Plan: INS
- Case Planner: Vince Fregoso (714) 667-2713



Industrial Activity:

630 S. Hathway St.

- New 2-story 4,100 sq. ft. industrial building
- Status: Site Plan Review comments returned to applicant
- Zoning: M-2 General Plan: IND
- Case Planner: Vince Fregoso (714) 667-2713

